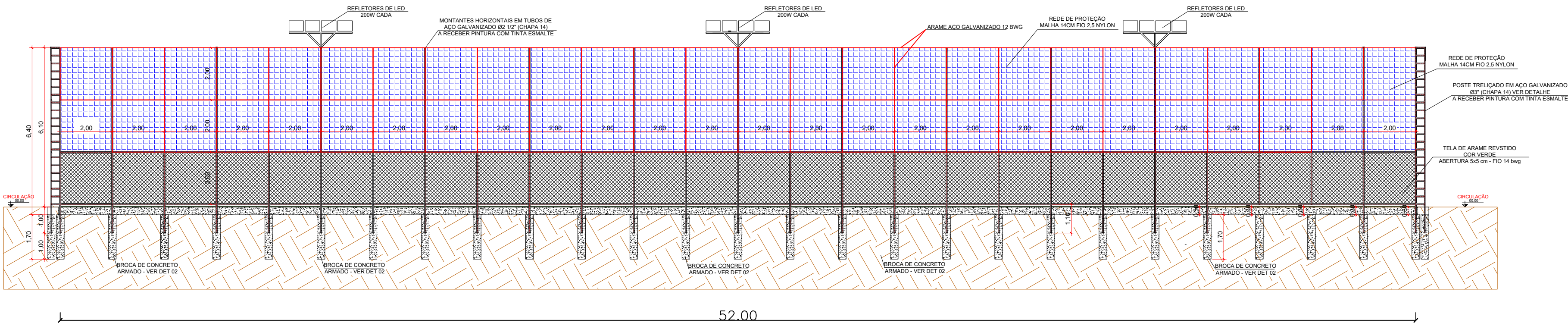
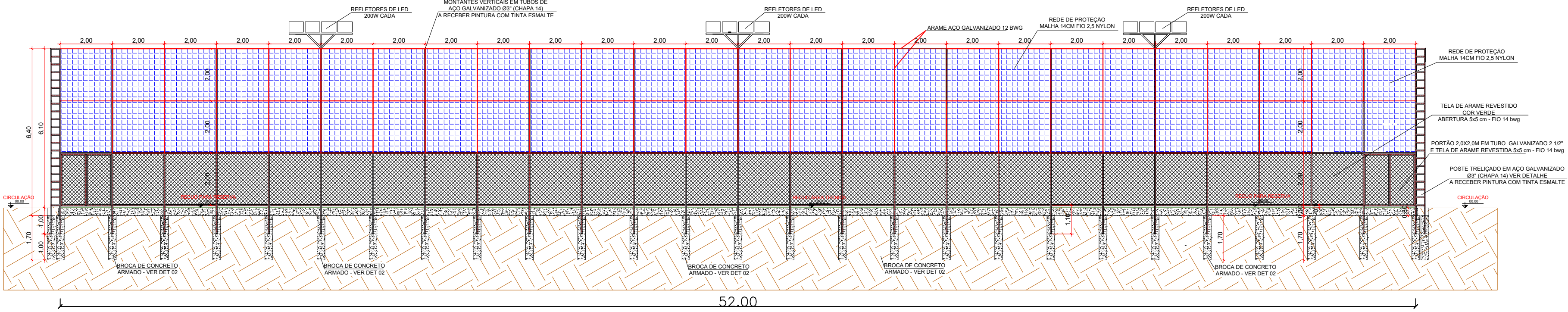


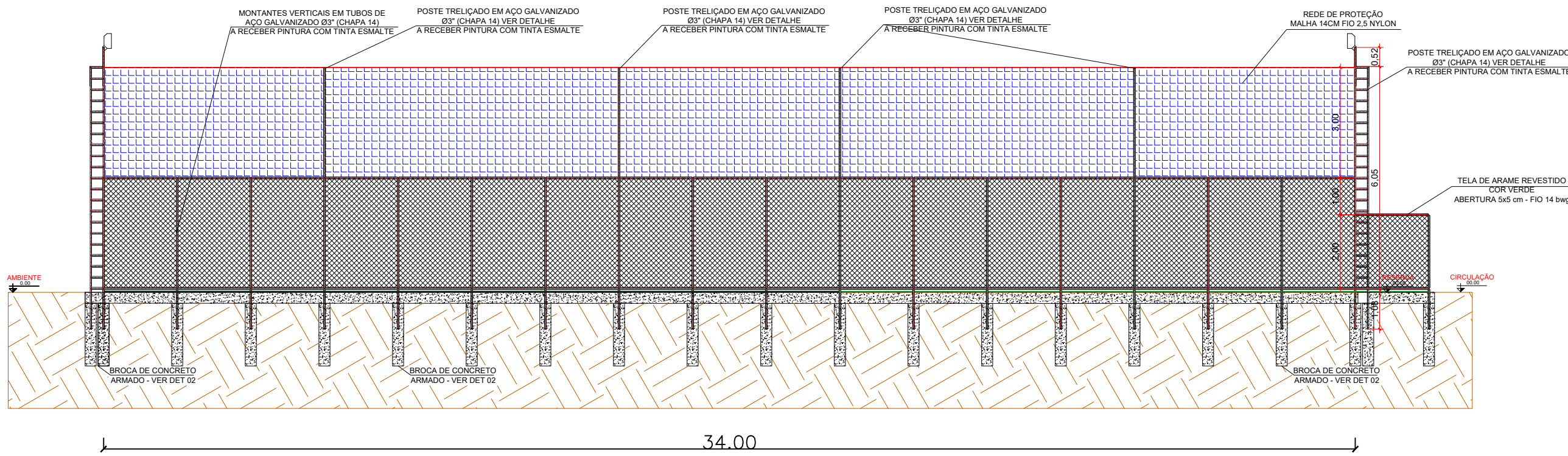
VISTAS CONSTRUTIVAS - ALAMBRADO
POSIÇÃO LONGITUDINAL LATERAL 1



VISTAS CONSTRUTIVAS - ALAMBRADO
POSIÇÃO LONGITUDINAL LATERAL 2



VISTAS CONSTRUTIVAS - ALAMBRADO
POSIÇÃO TRANSVERSAL - FUNDOS

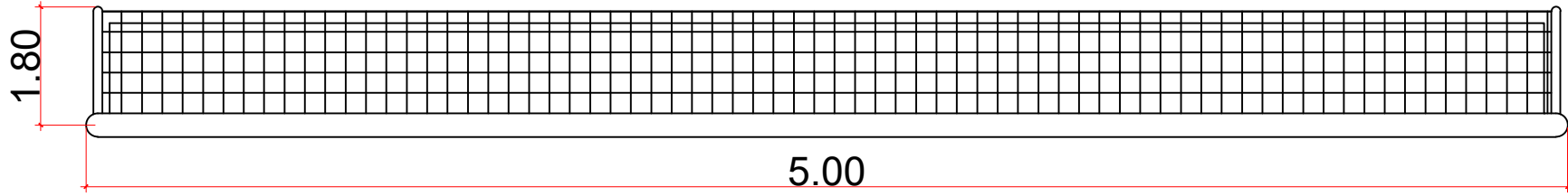


TRAVES EM TUBO DE AÇO
GALVANIZADO Ø3\" #14 -
PINTADO NA COR BRANCA

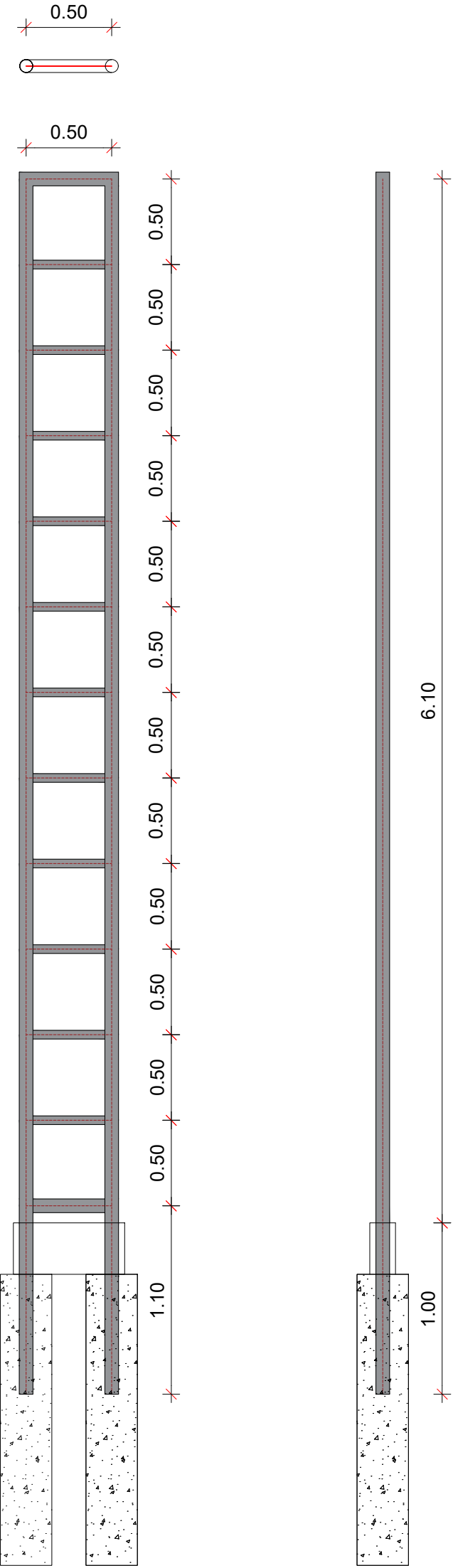
REDE COM
MALHA 7X7CM

BROCA DE
CONCRETO Ø 30CM -
CHUMBAR O TUBO NA
MESMA

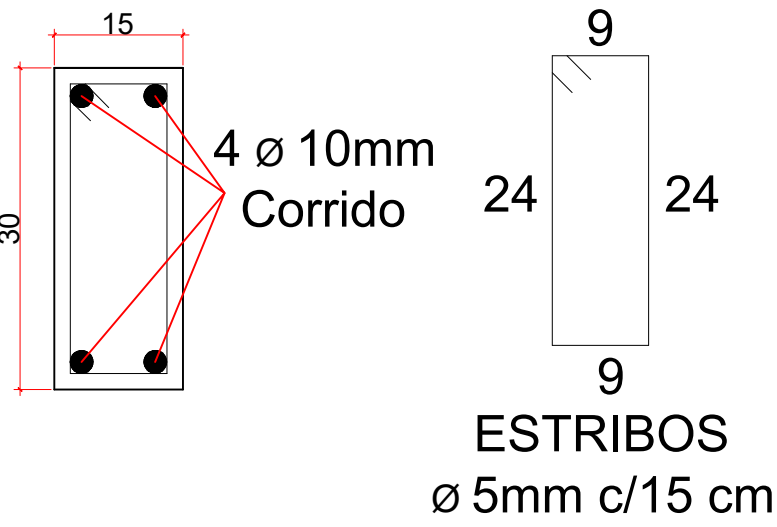
DET. 03 - DETALHE DO GOL



DET. 03 - POSTE TRELIÇADO 14UN

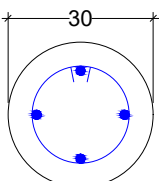


DET. 01 - VIGA DE CONTENÇÃO:
191,08M

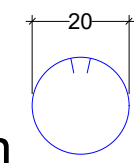


DET. 02 - BROCA DE CONCRETO
(106X)

N1- 4Ø10mm
C=200cm



N2-9Ø5mm
c/20cm - C=80cm



MONTANTE VERTICAL
DO ALAMBRADO

